



Walmer Road

Southport, PR8 4SX

£700 Per Month

Situated in the sought-after area of Birkdale, this well-presented one-bedroom apartment offers a perfect blend of convenience and comfort, making it ideal for professionals, couples, or those looking to downsize.

Key Features:

- Spacious double bedroom
- Bright and airy living room
- Modern fitted kitchen
- Well-appointed bathroom
- Neutral décor throughout
- Quiet residential location
- Excellent transport links and amenities nearby

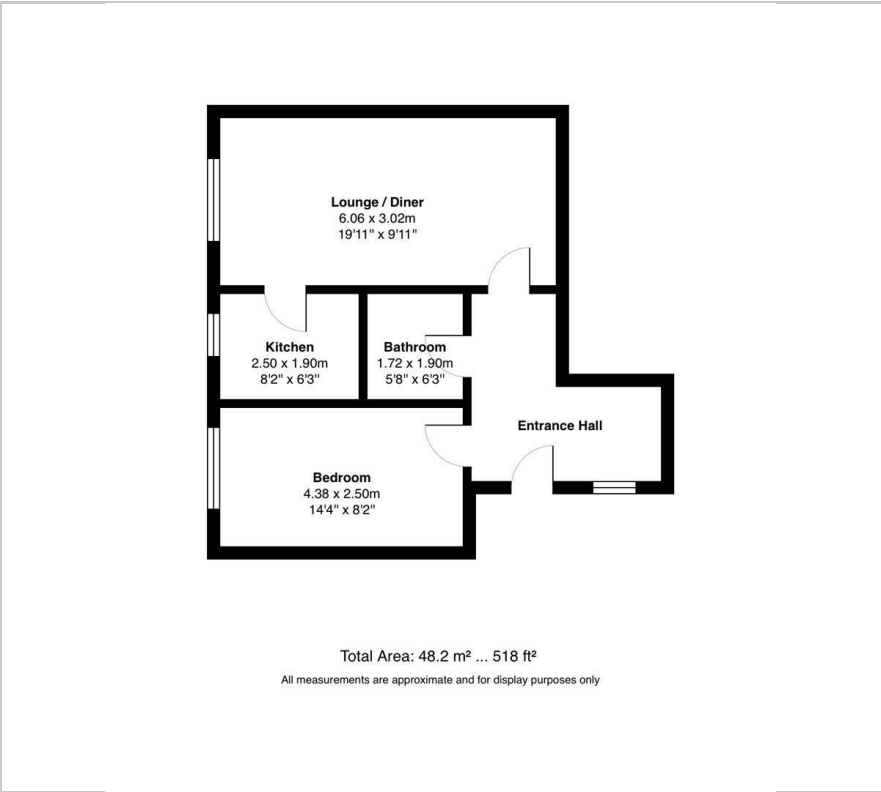
- One double bedroom
- First floor apartment
- Victorian conversion
- 518 square feet
- Amazing location
- Allocated parking space
- Close proximity to Birkdale Village
- Great transport links
- Available in August 2024
- Deposit £865.38

Viewing

Please contact our Flexi-Agent Southport Lettings Office on 01704 889455 if you wish to arrange a viewing appointment for this property or require further information.



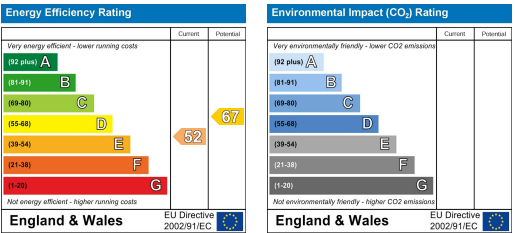
Floor Plan



Area Map



Energy Efficiency Graph



These particulars, whilst believed to be accurate are set out as a general outline only for guidance and do not constitute any part of an offer or contract. Intending purchasers should not rely on them as statements of representation of fact, but must satisfy themselves by inspection or otherwise as to their accuracy. No person in this firms employment has the authority to make or give any representation or warranty in respect of the property.